



Heworth Grange  
School

*Enriching Lives, Inspiring Ambitions*

**Title: Unit 1**  
**Photography**  
**Independent Project**

Creating an artist response

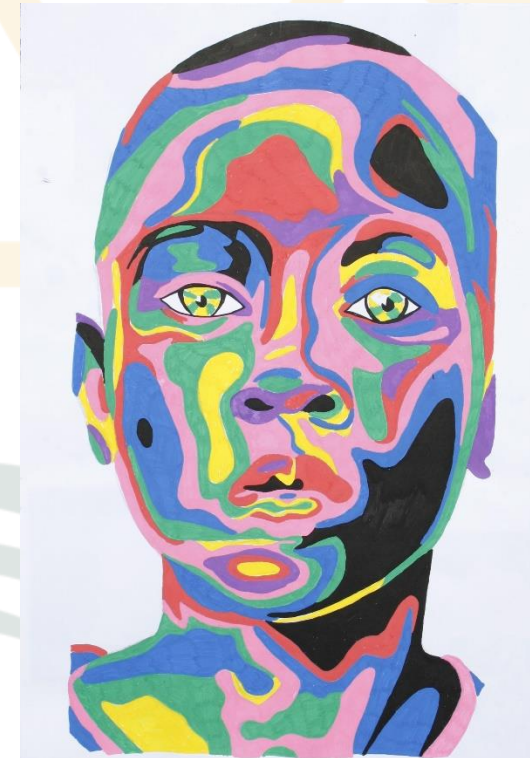


Proud to be part of  
**Consilium**  
Academies

---

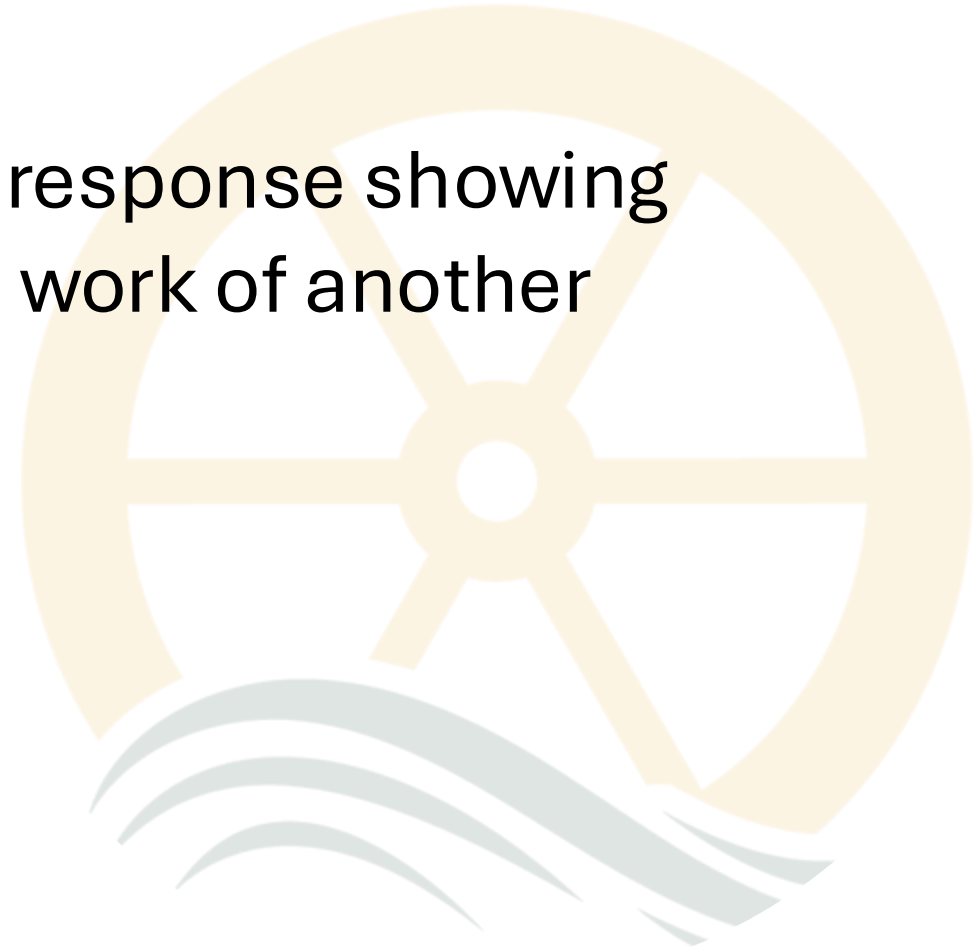


The purpose of studying another artist's work is to copy what they have done. Discuss...





- To create an artist response showing influence from the work of another artist.





When creating an artist response, you need to create a piece of work which shows **some** influence from your artist.

This student has researched Jonathon Yeo and for their artist response they have used his sectioned painting style but used their own colour palette.



**Keywords:** skill, technique, process, medium, context.





Apply



Proud to be part of  
Consilium  
Academies

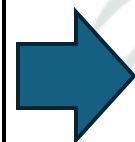
## Task –

Identify from your artist analysis what you are going to take from the work – what inspiration you are stealing.

Create an artist response based on this inspiration BUT ensure this is a piece you have created and not just a copy of their work.



Inspiration from Yeo's work – sectioned photograph



Photographic response using a change in colour and model which is personal and meaningful.

**Keywords:** skill, technique, process, medium, context.



Heworth Grange  
School  
Enriching Lives, Inspiring Ambitions



## Evaluate your outcome:

- Strengths
- Areas to improve
- How your artist influenced this work.

**Keywords:** skill, technique, process, medium, context.



# Questions



Proud to be part of  
**Consilium**  
Academies