



Heworth Grange
School

Enriching Lives, Inspiring Ambitions

Title: Unit 1
Fine Art
Independent project

Creating an artist response



Proud to be part of
Consilium
Academies

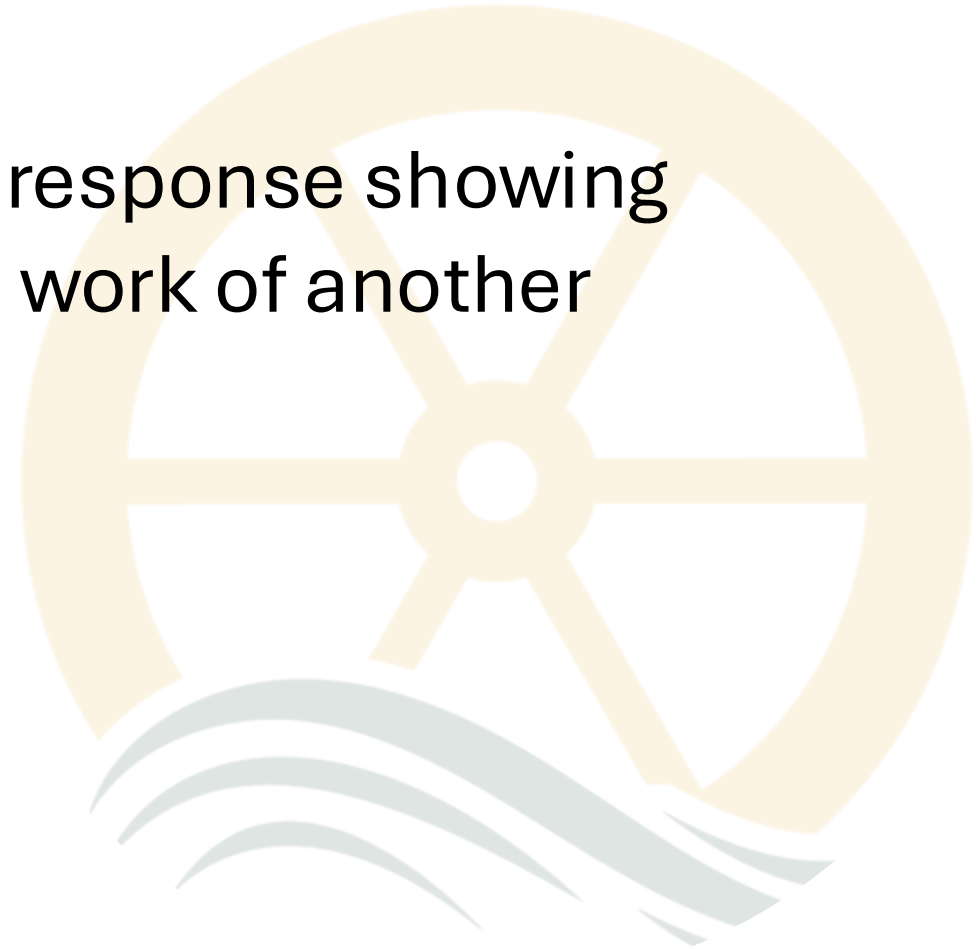


The purpose of studying another artist's work is to copy what they have done. Discuss...





- To create an artist response showing influence from the work of another artist.





When creating an artist response, you need to create a piece of work which shows **some** influence from your artist.

This student has researched Jonathon Yeo and for their artist response they have used his sectioned painting style but used their own colour palette.



Keywords: skill, technique, process, medium, context.





Apply



Proud to be part of
Consilium
Academies

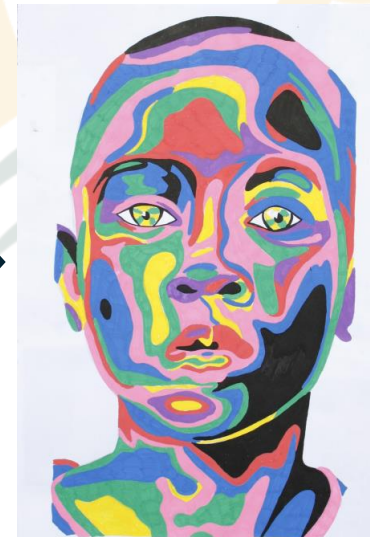
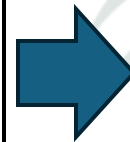
Task –

Identify from your artist analysis what you are going to take from the work – what inspiration you are stealing.

Create an artist response based on this inspiration BUT ensure this is a piece you have created and not just a copy of their work.



Inspiration from Yeo's work – sectioned paint



Painting from a primary source using Yeo's sectioned painting style but with own colour palette.

Keywords: skill, technique, process, medium, context.



Heworth Grange
School
Enriching Lives, Inspiring Ambitions



Evaluate your outcome:

- Strengths
- Areas to improve
- How your artist influenced this work.

Keywords: skill, technique, process, medium, context.



Questions



Proud to be part of
Consilium
Academies